

ADC AD-30V

30-lb/13kg Capacity OPL Dryer

- 30-lb./13kg capacity
- 12.5 cu. ft. basket volume
- 100,000 Btu/hr heat input, 460 cfm airflow
- Radial airflow
- Steel door with gasketless glass
- Easy access to lint compartment
- Fits through a standard 36" door
- Available in gas, steam and electric heat



Engineer-Driven Design That is Built to Last

Our dryers showcase ADC's engineer-driven approach to design. Bearings are permanently lubricated on the motor and drive system. There are no chains used at ADC; rather, we use V-belts and pulleys for smooth, quiet, and trouble-free operation. Our dryer cabinets are electrostatically powder-painted inside and out, then baked at 420-degrees fahrenheit before final assembly ensuring the hardest surface and the longest-lasting finish in the industry.

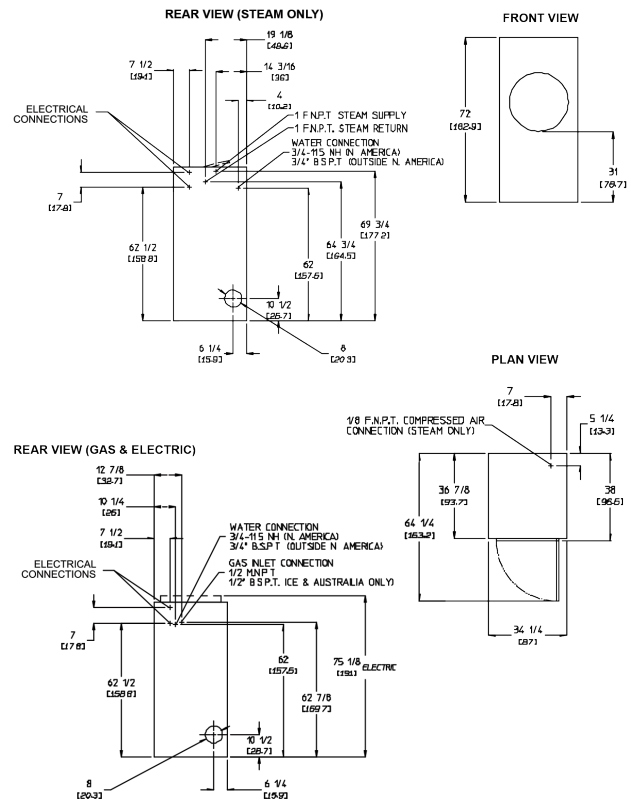
Rugged Steel Door with Gasketless Door Glass

Our dryer doors are one solid piece of steel with gasketless glass. This eliminates the issue of glass falling out due to wear and tear on rubber gaskets that some manufacturers use to secure their glass.

Easy-to-Read, Multilingual Controls

ADC were the first to bring computer-operated dryers to the market and today and continue to be a leader in applying technology to dryer operation. Our years of experience along with the accessible design, easy-to-read LED screens and the user-friendly multilingual interface positions ADC as the pioneer in the laundry industry.

SPECIFICATIONS		AD-30V								
Tumbler Capacity (dry weight)		30 lbs. (13.6kg)								
Tumbler Diameter		32-3/4" (83.2 cm)								
Tumbler Depth		25-5/8" (65.1 cm)								
Tumbler Volume		12.5 cu ft (353.9 L)								
Tumbler/Drive Motor (non-reversing/reversing)		1/2 hp (0.37 kW) / 1/2 hp* (0.37 kW)								
Blower/Fan Motor (non-reversing/reversing)		N/A / 1/2 hp* (0.37 kW)								
Door Opening (Diameter)		21-1/2" (54.61 cm)								
Door Sill Height		21-1/2" (54.61 cm)								
S.A.F.E. Water Connection		3/4"								
Width		870 mm								
Depth		965 mm								
Height		1829 mm								
Airflow - gas/electric/steam 50 Hz		383 cfm								
Exhaust Connection		8"								
GAS MODEL:***	Approx. Net Wt.	534 lbs (242 kg)								
	Approx. Ship Wt.	571 lbs (259 kg)								
	Heat Input	100,000 btu/hr (25,200 kcal/hr)								
	Inlet Pipe Connection	1/2" B.S.P.T. (CE and Australia Only)								
ELECTRIC MODEL:	Approx. Net Wt.	534 lbs (242 kg)								
	Approx. Ship Wt.	571 lbs (259 kg)								
	Exhaust Connection	8" (20.32 cm)								
<table border="1"> <thead> <tr> <th colspan="2">Oven Size</th> </tr> <tr> <th>kW</th> <th>Btu/hr (kcal/hr)</th> </tr> </thead> <tbody> <tr> <td>20</td> <td>68,200 (17,200)</td> </tr> <tr> <td>24</td> <td>81,900 (20,660)</td> </tr> </tbody> </table>			Oven Size		kW	Btu/hr (kcal/hr)	20	68,200 (17,200)	24	81,900 (20,660)
Oven Size										
kW	Btu/hr (kcal/hr)									
20	68,200 (17,200)									
24	81,900 (20,660)									
STEAM MODEL:***	Approx. Net Wt.	593 lbs. (269 kg)								
	Approx. Ship Wt.	631 lbs. (286 kg)								
	Steam Consumption	104 lb/hr (47.2 kg/hr)								
	Operating Steam Pressure	125 psi max (8.6 bar)								
	Exhaust Connection (Diameter)	8" (20.32 cm)								
	Boiler Horsepower (Normal Load)	3.0 Bhp								
	Supply Connection	1" F.N.P.T.								
	Return Connection	1" F.N.P.T.								



Specifications in parentheses are metric equivalents.

** Reversing dryer available with 3-phase (3Ø) 1/2 hp (0.373kW) motor standard.

***Specify air-operated or electromechanical steam damper system. Air-operated steam damper system must be provided with clean, dry and regulated 80 psi \pm 10 psi (5.51 bar \pm 0.68 bar) air supply.